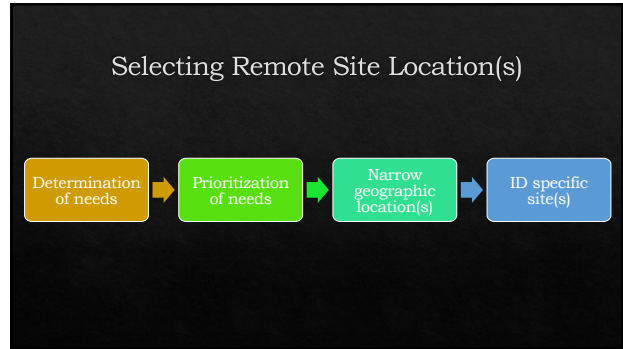


1



2

- Travel distance to clinic
- Annual household income
- Rates of loss-to-follow-up
- Access to health care
- Locations of pediatric audiologists in the state

**Determination of needs**

3

### South Dakota Challenges

Reasons for limited access to pediatric audiologists across South Dakota

- Limited geographic location of pediatric audiologists
- Frontier state
- Financial limitations

4

5

### Nebraska Needs

6

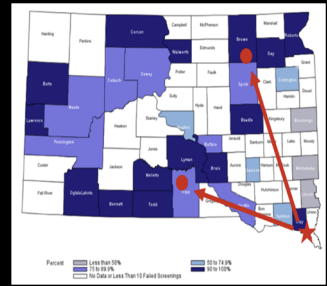
**ID specific site(s)**



- ◊ Considerations:
  - ◊ What do I plan to do?
  - ◊ Sound booth needs
  - ◊ Staff needs
  - ◊ Equipment needs
  - ◊ Internet access
    - ◊ Upload speed available
  - ◊ State health care system(s)
  - ◊ Access to IT support
  - ◊ Billing considerations

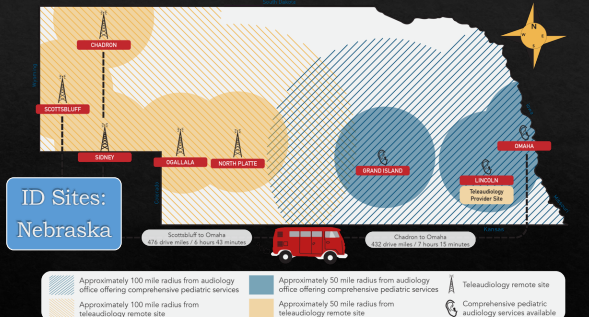
7

**ID specific site(s)**



8

**ID Sites: Nebraska**



- ◊ Services offered
- ◊ Privacy, security, and accessibility
- ◊ Agency/IT approval
- ◊ Equipment and instrumentation
  - ◊ Laptop or PC for ABR, with dual monitor
  - ◊ Webcam, speakers, mic
- ◊ Sufficient internet connection
- ◊ Videoconference solution
- ◊ Ambient noise

9

**ID specific site(s)**

**Physical Space Selection**

10

**Congratulations!**

...But you are not done

11

**Spoke Site Training**

- ID Staff
- Provision of training
- Training materials
- Champion
- Logistics

12

## ID Staff

- ◆ Comfort with interacting with patient and family
- ◆ Trainable / able to follow instructions
- ◆ Licensure considerations
- ◆ Billing considerations
- ◆ Backup
- ◆ A champion for the effort

13

## Provision of training

- ◆ On-site training
- ◆ On-demand training
  - ◆ Quick reference guides
  - ◆ Training videos
- ◆ Digestible pieces
- ◆ Easily accessible
- ◆ Practice sessions

14


## Training materials

- ◆ Multiple modalities
- Videos:
  - Swaddling: <https://youtu.be/SXRiD3nCrNo>
  - Otoscopy: <https://youtu.be/a0o0TAmSuF>
  - Scrubbing: <https://youtu.be/RmwPIFe3XW4>
  - Placing electrodes: <https://youtu.be/4F3xkurP4p>
  - Placing inserts: <https://youtu.be/P9CtdlNLG4>
  - Bone Conduction: <https://youtu.be/5elhE1B-25A>
  - Removal of Electrodes: <https://youtu.be/vtlJsz6atsnJ>

### Quick reference guides

15

## Champion



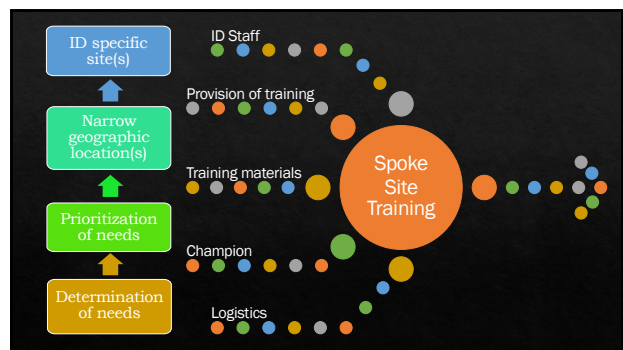
- ◆ Advocate for tele-services
- ◆ Greater likelihood of working through problems
- ◆ Understands the importance
- ◆ Engages local community in referrals

16

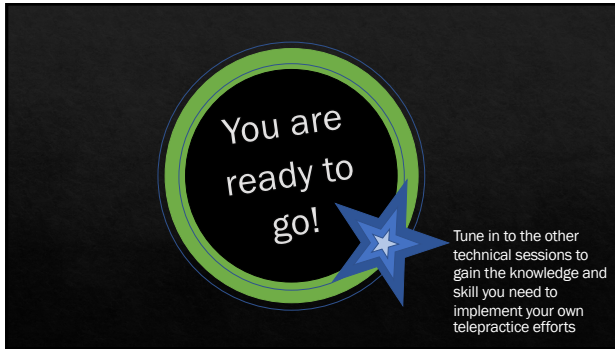
## Logistics

- ◆ Communication plan between sites
  - ◆ Who is primary contact for patients?
- ◆ Appointment set-up plan
  - ◆ How to schedule
  - ◆ Who to schedule (age ranges, types of appts, etc.)
- ◆ Scheduling / appointment availability
  - ◆ Fixed daily/weekly/monthly spots
- ◆ Consenting process

17



18



19